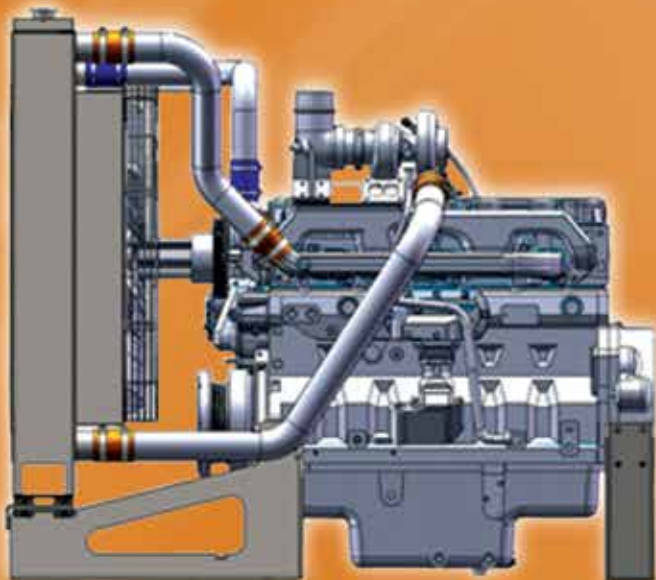


# The Diesel Radiator Advantage

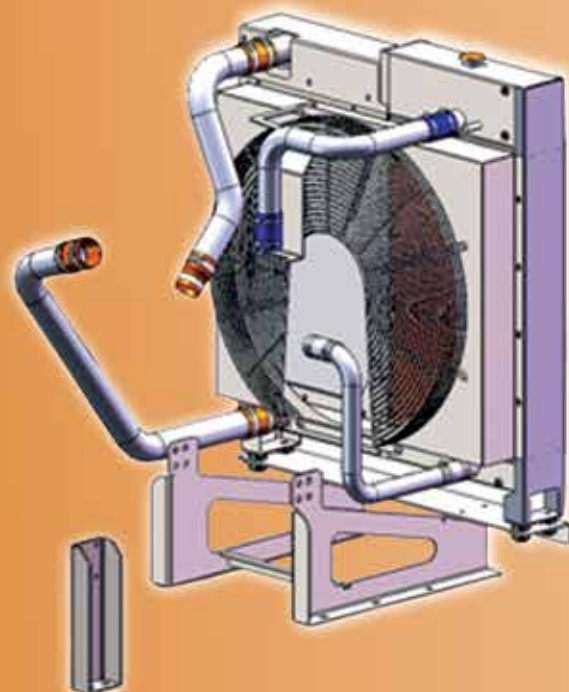
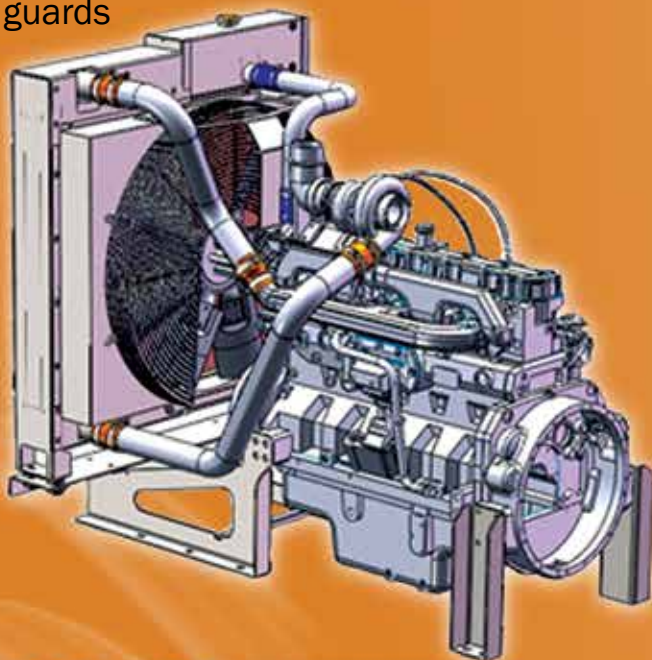


## Experienced Engineers

- Seven engineers on staff to address your needs and assist with design
- Designing with SolidWorks® 3-D modeling software and proprietary sizing software

## High-Quality Radiators

- Complete kits available (including CAC and water tubing, hoses, brackets, etc.)
- Units are designed for heavy-duty, mobile and stationary applications
- Built-in extra cooling capacity for use in high ambient, sound attenuated enclosures
- Designed to fit YOUR enclosures and applications
- Custom fan guards that serve a dual purpose as belt guards



## Additional Advantages

- Short lead times
- More than 70,000 sq. ft. of manufacturing facilities and 120 employees
- Warranty comes standard on all units — we always stand behind our product
- Competitive pricing
- Made in America

**DIESEL**  
**RADIATOR CO.**

1990 Janice Avenue • Melrose Park, IL 60160 • 708.345.9244 • 800.345.9244  
Fax: 708.345.2194 • Email: [sales@dieselmotor.com](mailto:sales@dieselmotor.com) • [www.dieselmotor.com](http://www.dieselmotor.com)

RELIABLE REMOTE RADIATORS  
FROM

**DIESEL**   
RADIATOR CO.



**COMPLETE LINE:**

- Horizontal and vertical
- Up to 150 sq-ft
- Online sizing software
- Made in the U.S.A.

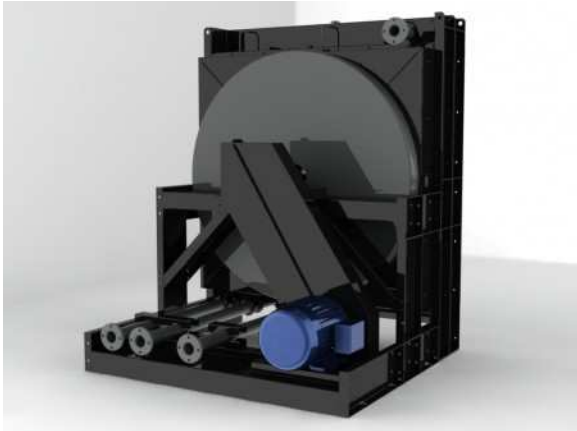
**ADDITIONAL OPTIONS:**

- Corrosion resistant coatings
- Low noise designs
- Multiple fan units
- Belt and pulley kits

# **DIESEL** **RADIATOR CO.**

RELIABILITY. PERFORMANCE. DURABILITY.

## **Remote Radiator**



### **Remote Radiator Models Available:**

- Vertical Remote: Direct and Belt Driven
- Horizontal Remote: Direct and Belt Driven

### **Standard Features:**

- 3 to 120 Square Foot Cores, in 1 or 2 core configurations
- OSHA Compliant Guarding: belt, fan, and core guards
- Surge Tanks
- Premium TEFC Motors

### **Optional Features:**

- Low Noise Packages
- Epoxy Coated Cores
- Galvanized Steel
- Multiple Fan/Motor Packages





# **DIESEL** **RADIATOR CO.**

RELIABILITY. PERFORMANCE. DURABILITY.

## **SMART Systems**

Simple Modular Adaptive Radiator Technology



### **System Benefits:**

- Optimized Engine Performance
- Improved Fuel Efficiency
- Lower Emissions
- Lower Noise Levels
- Customized for your Application
- Fully Variable Speed Functionality
- Remote Mount Capability
- Reduced Parasitic Losses

Improving Fuel Efficiency, Optimizing Engine Performance, and  
Reducing Emissions

# FRAC TRAILER COOLING SYSTEM

FROM

**DIESEL**   
**RADIATOR CO.**



## FEATURES:

- Turnkey Cooling System
- Aluminum Modules
- Ease of Cleaning
- Streamlined Connections
- Service Access Door

## APPLICATIONS:

- Caterpillar 3512 SCAC
- MTU 12V4000
- Cummins QSK50
- Tier IV Options Available
- Made in the U.S.A.

# MANDREL BENT TUBING

FROM

**DIESEL**   
**RADIATOR CO.**



Tube OD	CLBR	Min Straight Length between bends	Standard	Min Strght for Bead	Max Angle
1.500	2.500	3.000	*		
1.750	1.750	4.500	*	1.125	110
2.000	2.000	4.125	*	1.000	110
2.000	3.000	3.125		1.000	120
2.250	3.375	3.375	*	2.000	120
2.500	2.500	5.125		2.000	95
2.500	3.750	3.875	*	2.000	110
3.000	3.000	6.125		1.125	90
3.000	4.500	4.625	*	1.125	110
3.500	3.500	9.000	*	1.125	
4.000	4.000	10.500	*	1.125	90
5.000	7.500	13.000	*	1.125	90

## AVAILABLE OPTIONS:

- Aluminized Steel
- Stainless Steel
- High Temp Paint
- Powder Coating



## **Coatings Information**

### **Fabrication:**

- Carbon Steel Sheet
- Stainless Steel Sheet
- Aluminum Sheet
- Aluminized Tubing
- Stainless Steel Tubing

### **Coatings/Fabricated:**

- Wet Spray Paint
- Powder Coating
- Ceramic Coating
- Ceramic Clear Coating
- Stainless Steel Powder Coating
- Hot Dip Galvanizing

### **Coatings & Fabrication/Core:**

- Epoxy Coating
- Solder/Tin Plating
- Heresite Coating