

PAD-MOUNTED OUTDOOR LOAD BANK

X100P

BY MOSEBACH MANUFACTURING

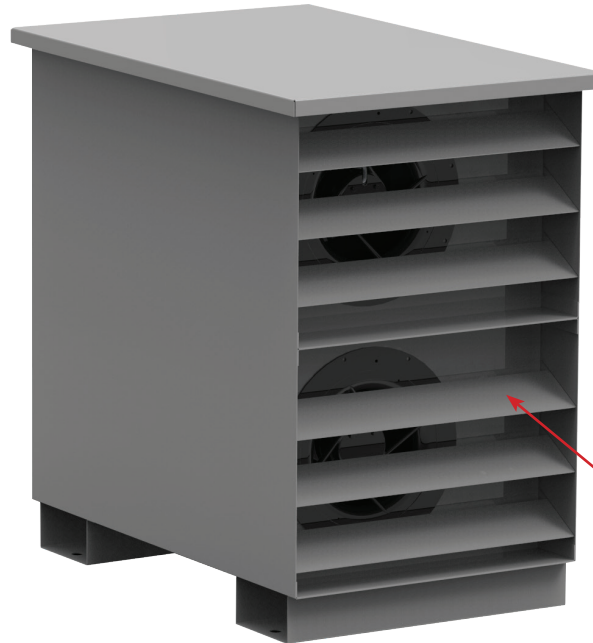
ISO 9001:2015 Registered

NRTL site-certified

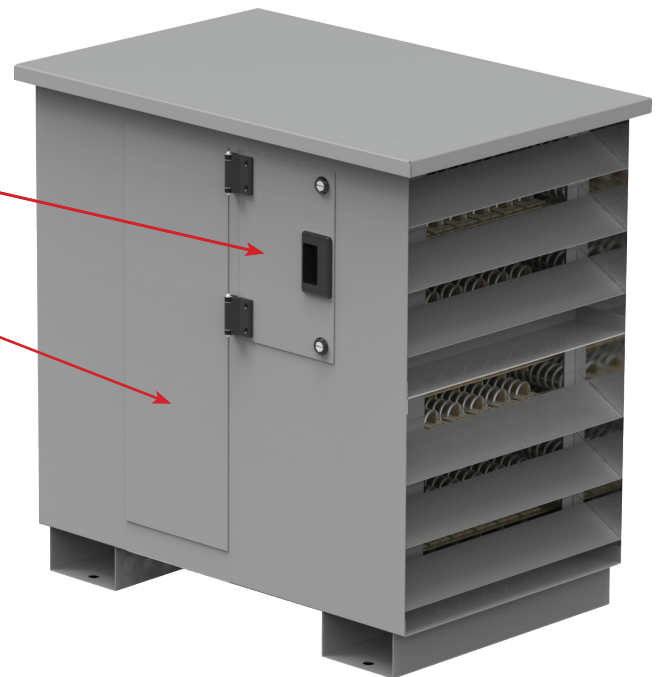
Mosebach's Pad-Mounted Load Bank, the X100P family, is designed for permanent outdoor installation. It offers you a continuous load of 50, 75, or 100 kW at 480, 240, or 208 volts in a compact enclosure.

Local Controls allow you to adjust the load and perform all on-site testing of the generator.

Power connections are made through a gland plate at the bottom of the load bank and are lugged to an internal bus bar. Auxiliary power is made through a gland plate at the bottom as well to terminal blocks.



*Inlet & exhaust
louvers*



*Access door
to controls*

*Access panel to
termination points*

*Smallest footprint
in the industry.*

MOSEBACH
Mosebach Manufacturing Company

1417 McLaughlin Run Rd.
Pittsburgh, PA 15241

For orders and information call **412-220-0200**

loadbanks@mosebachresistors.com | www.mosebachresistors.com

specifications: X100P

Construction

- The load bank is constructed of aluminized steel with an electrostatically sprayed powder coat.
- The unit has forklift channels so it can be easily maneuvered.
- Rigid louvers protect both the air inlet and exhaust to prevent rain ingress.

Connections

- Connections are made through a gland plate on the base of the load bank to internal bus bars.
- Auxiliary Power Connections are made through a gland plate to terminal blocks.

Controls

- Main on/off switch allows power to the fans
- Master Load on/off switch to control load steps
- Load Switches allow a varying load in increments of 5 kW
- Air flow acceptance lamp
- Voltage Acceptance lamp

Resistor Elements

- Mosebachs X100P uses Mosebach's own CrossWire™ Resistors.
- Mosebach has over 40 years' experience in manufacturing resistors for the toughest industries, railroad and mining.

Safety

- Over temperature and over voltage sensors.
- Ground connection
- Branch fusing
- Air pressure relay
- Protection Circuit for fans

AVAILABLE OPTIONS:

- Digital Meter and Current Transformers
- Remote Control using Microsoft Surface with Mosebach designed software
- Control Transformer
- 24" riser to prevent snow drift from blocking airflow.
- Lifting eyes
- CSA Site Certified



MODELS AVAILABLE

Model	kW	Resolution	Voltage	Phase	Dimensions (in.) (L x W x H)
X50P	50	5	208 or 240 or 480	3	34" x 22" x 34"
X75P	75	5	208 or 240 or 480	3	34" x 22" x 34"
X100P	100	5	208 or 240 or 480	3	34" x 22" x 34"
X125P	125	6.25	208 or 240 or 480	3	34" x 22" x 34"
X150P	150	5	208 or 240 or 480	3	34" x 22" x 48"
X200P	200	5	208 or 240 or 480	3	34" x 22" x 58"



1417 McLaughlin Run Rd.
Pittsburgh, PA 15241

© 2018 Mosebach Manufacturing Company

We can design and build almost any load bank to fit your needs. Please contact us with your specifications!

For orders and information call **412-220-0200**

loadbanks@mosebachresistors.com | www.mosebachresistors.com

X100P 07/18