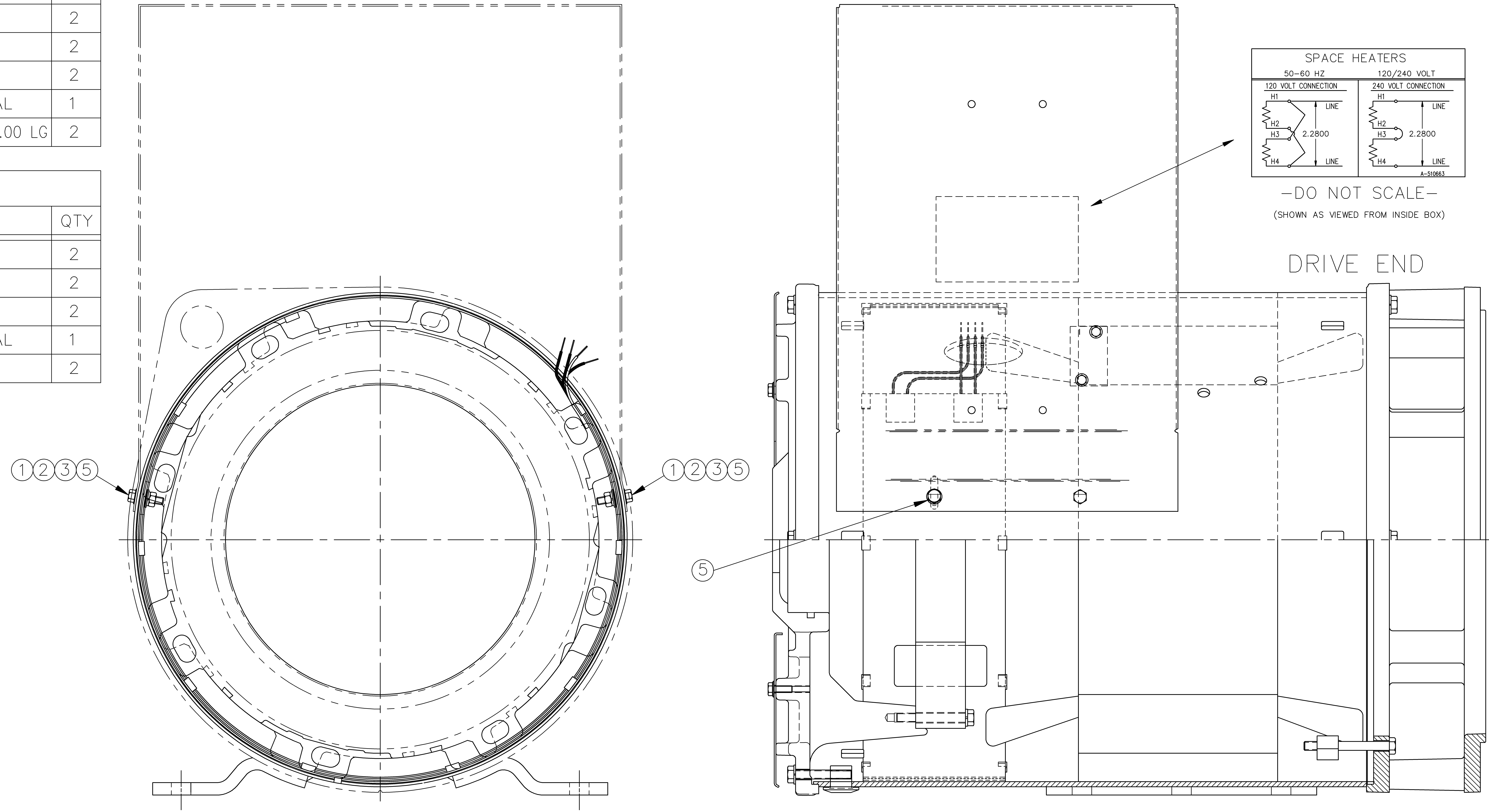


360 MAGNAPLUS SHOWN

360 PLS		
ITEM	DESCRIPTION	QTY
1	FLAT WASHER 1/4	2
2	SPLIT LOCKWASHER 1/4	2
3	HEX NUT 1/4-20	2
4	SPACE HEATER CONNECTION DECAL	1
5	HEX HD WHIZLOCK SCREW 1/4-20 x 1.00 LG	2

280JV PLS		
ITEM	DESCRIPTION	QTY
1	FLAT WASHER 6MM	2
2	SPLIT LOCKWASHER 6MM	2
3	HEX NUT M6 X 1	2
4	SPACE HEATER CONNECTION DECAL	1
5	HEX HD FLG LOCK M6 X 1 X 20 LG	2



OPPOSITE DRIVE END (O.D.E.)
(BRACKET & EXCITER REMOVED)

ASSEMBLY INSTRUCTIONS:

- 1- REMOVE O.D.E. BRACKET WITH EXCITER STATOR.
- 2- SLIDE SPACE HEATER INSIDE OF FRAME SUCH THAT SPACE HEATER LEADS ARE NEXT TO THE FRAME LEAD EXIT HOLE. REMOVE THE (2) O.D.E. CONDUIT BOX MTG SCREWS. FASTEN HEATER INSIDE FRAME USING A SCREW, FLAT WASHER, LOCKWASHER AND HEX NUT (2 PL).
- 3- ROUTE SPACE HEATER LEADS THRU LEAD EXIT HOLE.
- 4-INSTALL O.D.E. BRACKET WITH EXCITER STATOR.
- 5- AFFIX SPACE HEATER CONNECTION DECAL (A-510663) INSIDE BOX.
- 6- STAMP SPACE HEATER PLATE (A-94326) PER SALES ORDER & SECURE TO FRAME PER NAMEPLATE ASSY 778692-0A.

		TOLERANCES UNLESS SPECIFIED		REGAL-BELOIT <i>Motor Technologies Group</i>		DRAWN TM 12-21-2000	
		DEC.	INCHES			CHK ML 12-21-2000	
3	ADDED 280JV PLS OPTION	GM81293	MRB	01/07/2004	TITLE SPACE HEATER ASSEMBLY 360PLS / 280JV PLS (115/230V)	SCALE	1=4
2	ITEM 1, 2, 3 WERE 6MM; ADDED ITEM 5	CN 9898	TM	01-10-2003		REF	779649-0A
1	NEW DRAWING	CN 9413	TM	12-21-2000		FMF	
NO.	REVISION	BY & DATE	CHK	ANG	FINISH	PREV	
THIS DRAWING IN DESIGN AND DETAIL IS OUR PROPERTY AND MUST NOT BE USED EXCEPT IN CONNECTION WITH OUR WORK ALL RIGHTS OF DESIGN AND INVENTION ARE RESERVED THIS IS AN ELECTRONICALLY GENERATED DOCUMENT - DO NOT SCALE THIS PRINT			RFP	CAD FILE 7796580a		SIZE	DRAWING NO. PAGE OF REV.
			DIST	LM	B	779658-0A	3