

# AXI FPS SX-F

INTERNATIONAL Compact Fuel Polishing Systems

The FPS SX-F is a programmable, fully automated, fuel maintenance system that removes water, sludge, and other contaminants from fuel storage tanks. Once installed, the FPS SX-F system operates independently to ensure fuel reliability through routine fuel filtration. The system's fuel polishing process stabilizes diesel and bio-fuels, eliminates microbial contamination, and ensures fuel remains clean. These compact fuel maintenance systems are specifically designed for permanent installations indoors, as well as confined spaces, such as inside gen-set enclosures or engine rooms.



## ◆ FPS SX-F SPECIFICATIONS:

Nominal Flow Rate	2.5 GPM/150 GPH (9.5 LPM/567.8 LPH)
Primary Filter	10 or 30 $\mu$ Particulate or 60 $\mu$ Stainless Steel Screen with Centrifugal Water Separator
Secondary Filter	1, 3, 10 or 25 $\mu$ Fine Filter or 3, 10 $\mu$ Water Block
Fuel Conditioner	LG-X 500 Inline Conditioner
Pump	1/3HP Gear Pump
System Controller	SFC-50 Smart Filtration Controller with Safety and Alarm Features
Power	120V/60Hz/15A or 230V/50Hz/15A
Plumbing	Black Iron
Ports	3/4" Equivalent JIC 37° Flare In 1/2" Equivalent JIC 37° Flare Out
Construction	Powder Coated Aluminum Back Plate
Dimensions	≈ 23" x 26" x 9" (H x W x D) (58 x 69 x 23 cm)
Weight	≈ 57 lbs (25.9 kg)
<b>Not for use with fluids that have a flash point below 100°F (37.8°C).</b>	

\*At 50 Hz, nominal flow rate decreases from 2.5 GPM to 2 GPM

Fuel has a limited shelf-life and even newly delivered fuel can contain water, sediment and microbial contaminants. Fuel filters should last thousands of hours. However, frequent filter changes, tank cleaning, and fuel replacement have become common maintenance practices that only address the symptoms of poor fuel quality.

The FPS fuel maintenance systems are designed to prevent fuel deterioration through routine filtration in order to consistently provide a reliable supply of fuel.

## ◆ FPS SX-F SYSTEM FEATURES:

- Smart Filtration Controllers (SFC-50)
- Fully Automated and Programmable Operation
- Integration with Vessel Monitoring Systems
- Modular "Plug & Play" Flexibility
- Unique Safety & Alarm Features
- Continuous-Duty Pumps, Viton Seals

For safe operation, the FPS SX-F is equipped with an automatic pump shut-down and indicators when filter elements require servicing.



1.239.690.9589  
1.877.425.4239 Toll Free  
www.AXI-International.com

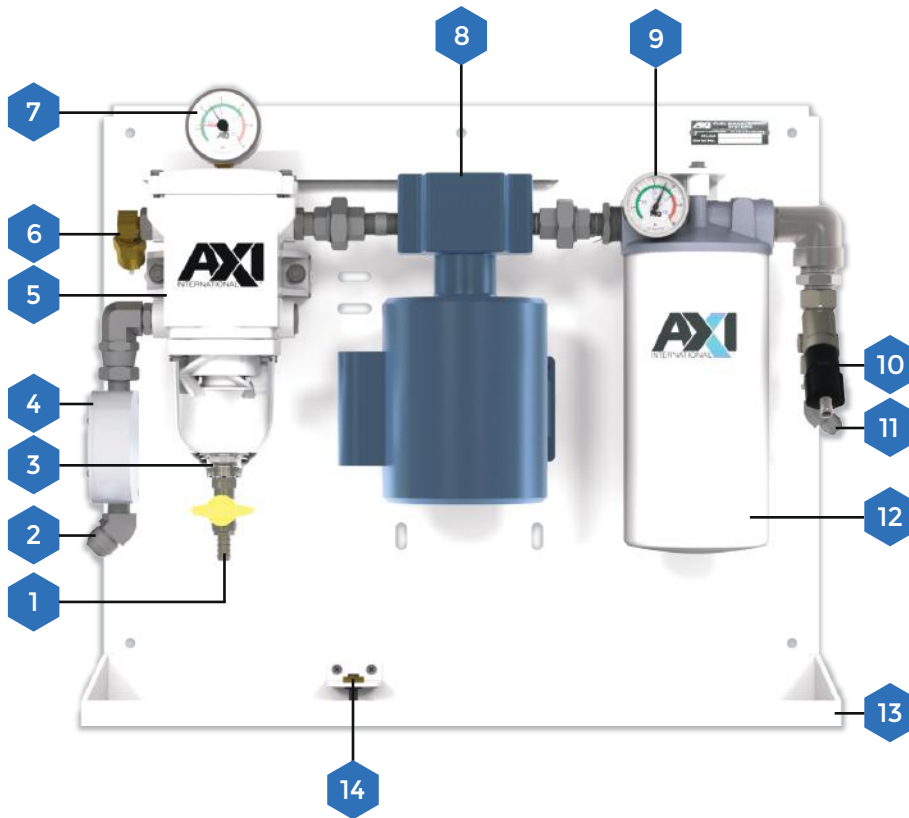
f AXI.International

t AXInternational

AXIFuel

AXIFuel

REV0202SXF010120



1. Drain Valve
2. Fuel Inlet (From Tank)
3. Water Collector
4. Fuel Conditioner
5. Primary Filter/Water Separator
6. Vacuum Switch
7. Vacuum Gauge
8. Motor with Coupled Gear Pump
9. Pressure Gauge
10. Flow Switch
11. Fuel Outlet (To Tank)
12. Final Filter
13. Drip Tray
14. Leak Detector

### ◆ FPS SX-F SYSTEM OPTIONS:

- TSC-7000 Controller
- Additive Injection
- Auto Water Drain
- Auto Filter Drain
- Multi-Point Flow Path

### ◆ REPLACEMENT FILTER OPTIONS:

Cartridge Filter	Part No.	Spin-On Filter	Part No.
10 $\mu$ Filter Element	01010	3 $\mu$ Water Block Filter	WB-3
30 $\mu$ Filter Element	01030	10 $\mu$ Water Block Filter	WB-10
60 $\mu$ Filter Element	01060S	3 $\mu$ Fine Filter	FF-3
		10 $\mu$ Fine Filter	FF-10
		25 $\mu$ Fine Filter	FF-25
		3 $\mu$ X-Glass Media Fine Filter	FFZ-3

### ◆ FPS SYSTEM INTEGRATION:

